

THINKY

Advancing the Reliability of the SMT Line Solder Paste Mixer

**Mix, Disperse, and Deaerate in Minutes.
Optimized viscosity control using step mixing.**



**Support lead-free
soldering**

Planetary Centrifugal Mixer

THINKY MIXER

SR-500

Mix, Disperse, and Deaerate in Minutes.

5 level step mixing for optimized temperature and viscosity control.

- Planetary Centrifugal Mixer provides solder vessel rotation on its axis and revolution around the mixer axis to produce powerful acceleration, ensuring simultaneous mixing, dispersing and deaerating. The resulting homogeneous dispersion of the solder powder produces not only a high quality solder but also removes even the smallest bubbles, which could cause solder paste splatter.
- Refrigerated solder reaches the ideal temperature quickly and can be used immediately. This eliminates condensation and reduces the time waiting for solder to its working temperature.
- Standard 500g solder containers can be loaded into the mixer directly.
- 5 level step mixing (speed and time) allows control over viscosity and temperature.
- It provides uniform paste consistency regardless of operator skill.
- Weight balance controls allow mixing of solder paste less than 500g in weight.



[Contact] THINKY CORPORATION

[Tokyo, Japan] 3-7-16 Iwamoto-cho, Chiyoda-ku, Tokyo, Japan 101-0032 tel. +81-3-5821-7455 fax. +81-3-3865-7833

Solder Paste Mixer

THINKY MIXER SR-500

**SR-500
Mixing**

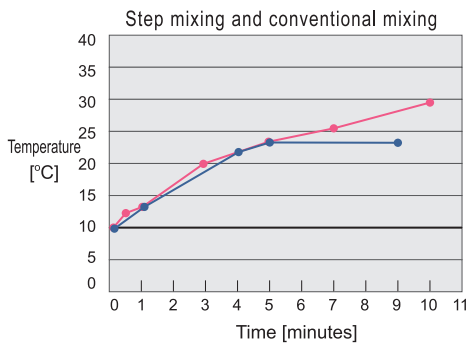
**Mix and Deaerate in Minutes.
Control Viscosity and Temperature.**



150ml vessel with 500 g of solder



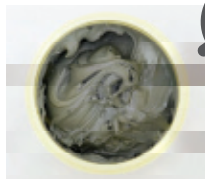
Example of Step Mixing



● Step Mixing:
Program the desired mixing time and speed for each step. It takes 5 steps per batch.

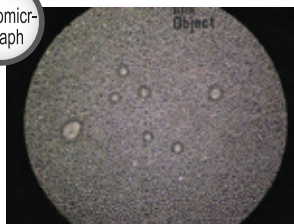
— conventional mixing at 1000 rpm
— SR-500 step mixing

Mixing Example

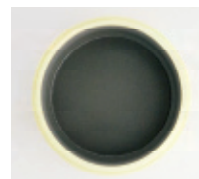


[Mixed by hand]

Photomicrograph

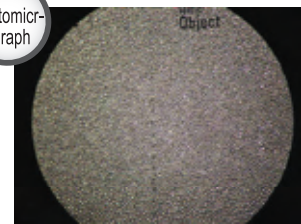


Bubbles are clearly visible and the solder powder is not homogeneously dispersed.



[Mixed by the SR-500]

Photomicrograph



Bubbles are terminated and the solder powder is homogeneously dispersed.

Planetary Centrifugal Mixer THINKY MIXER SR-500 Basic Specifications

Model	SR-500	Maximum mixing capacity	150ml	Dimensions	H380×W300×D340*(mm)
Product Name	Planetary Centrifugal Mixer THINKY MIXER	Maximum mixing mass	500g (NET)	Weight	*Freight Locks included : D365mm
System	Planetary propeller-less mixing system	Upper limit using a 300ml container	150ml, 500g (NET) 150ml, 560g (GROSS) *adaptor excluded		
Timer setting range	0 seconds, and 10sec to 30min	Safety Features	Door sensor, Vibration sensor, Revolution sensor		
Revolution speed	Max 1200rpm STD : Step1 Fixed 1000rpm, Step2 Fixed 500rpm STEP : 0rpm, 200-1200rpm	Power Supply	Single Phase AC100V±10 50Hz / 60Hz Power consumption Standby : approx.50VA Operating : max.900VA		
Rotation speed	Max 400rpm, Follows 1/3 of Revolution Speed	Operating Condition	Indoor use only, Elevation value within 2000m, Pollution degree 2		
Memory	5 memories (Each memory holds 5 sequential time and rpm steps.)	Operating Environment	10-35°C, 35-85%RH(Non-condensation)		



Included Adapters
150ml vessel adapter (1 included)

- Specification is subject to change without notification.
- Some types of mixing materials may be insufficiently mixed or deformed (degassed).
- This unit is not designed to be explosion-proof. Do not mix materials that are dangerous or hazardous to humans.
- The mixing results may vary depending on process conditions or materials.

- Visit our web site for product information and exhibition schedule
<http://www.thinky.co.jp/english>

- Contact us
mixer@thinky.co.jp



THINKY Business Partner :

Gentec Benelux
www.gentec.be
info@gentec.be
tel: +32 2 351 1800

THINKY CORPORATION
Pioneer of planetary centrifugal mixers

Headquarters:
3-7-16 Iwamoto-cho Chiyoda-ku Tokyo #101-0032, Japan
TEL +81-3-5821-7455 Fax +81-3-3865-7833