

# RX StarFire MAX UV Light System



## High Intensity Water Cooled UV Light System with Configurable Curing Length

### FEATURES/BENEFITS:

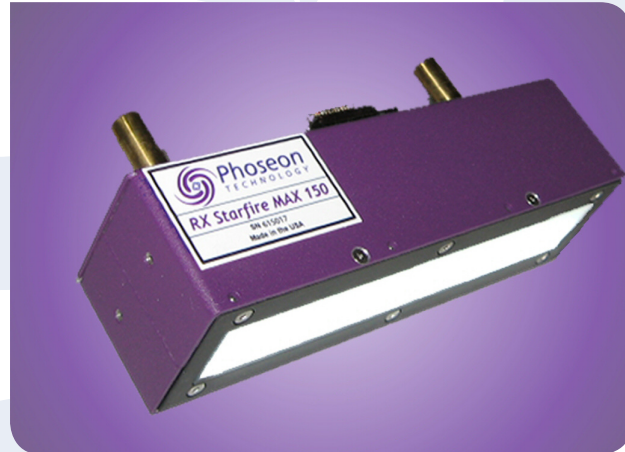
- SEMICONDUCTOR LIGHT MATRIX (SLM™) TECHNOLOGY
- LONGER LIFE
- HIGH INTENSITY
- PURE UV OUTPUT
- ENVIRONMENTALLY FRIENDLY

See the light for yourself -  
UV LED based SLM™ Technology

The RX Starfire MAX is a water cooled high intensity UV light “bar” with configurable emitting lengths of 75mm, 150mm & 300mm with an emitting width of 20mm.

Industrial UV curing applications for printing, coatings, and adhesives can now gain the proven advantages of high-intensity LED-based ultraviolet light.

As the world leader in delivering high power, UV-LED technology, Phoseon Technology pioneered the Semiconductor Light Matrix (SLM™). With SLM™ technology, OEMs can manufacture the environmentally cleanest, coolest operating, and most efficient UV-based systems commercially

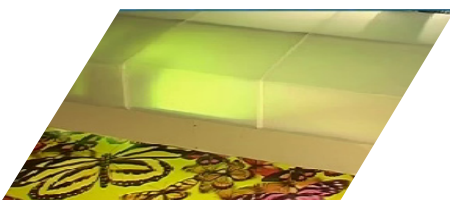


RX Starfire MAX is available in configurable UV emitting lengths from 75 to 300mm.

RX Series products utilize SLM™ technology which combines an array of light emitting semiconductor devices, with high tech micro optics and micro cooling in a cost-effective MOEMS (micro opto electro-mechanical system) package. The result is a high intensity UV light system with the following advantages:

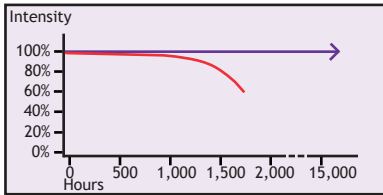
- Lower cost of ownership
- Increased productivity, maintenance free
- Improved yield with consistent UV output over time
- Lower operating cost with instant on/off - UV light system can be enabled only when required for curing
- Narrow UV spectral emission
- Spectral radiant power equivalent to multi-kilowatt mercury vapor arc lamp
- Cooler operating temperature
- Safer - mercury and ozone free
- Small form factor light source and power supply
- Simple electronic controls for easy integration

Phoseon's UV products are ideal for all types of curing applications including wide format ink jet printing.

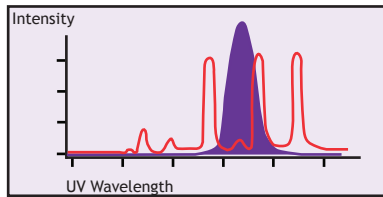


# RX StarFire MAX Specifications

## FEATURES

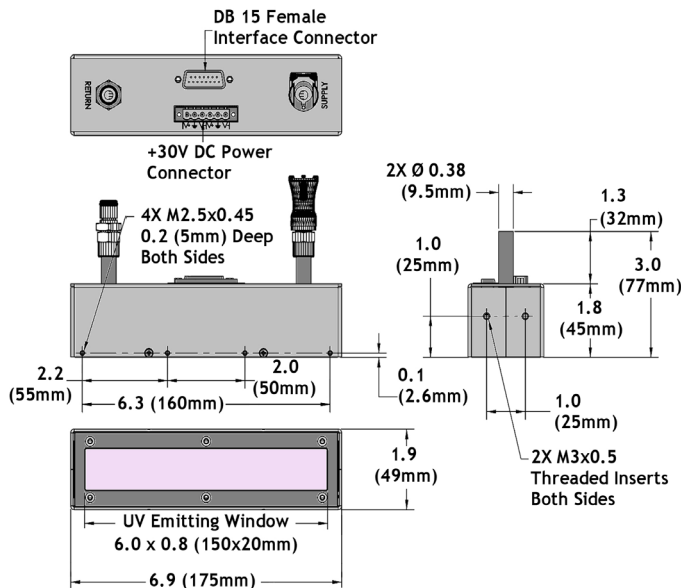


Phoseon's UV light systems (purple) maintain their intensity over a much longer lifetime than conventional mercury arc lamps (red).



Phoseon's UV light is more concentrated than UV light from mercury vapor arc lamps.

## PRODUCT DIMENSIONS



Interested in integrating our technology? Phoseon can tailor a solution for your particular integration needs. Please contact us to discuss your specific requirements.

## SPECIFICATIONS

Irradiance at UV Emitting Window: 4W/cm<sup>2</sup>

Emitting Window:

- RX Starfire 75: 75 x 20mm
- RX Starfire 150: 150 x 20mm
- RX Starfire 300: 300 x 20mm

Total UV Power: Up to 240W

Pure UV Output: 380-420nm

Interface Control: PLC

Instand On/Off: <5ms

Electrical/Power Supply: 100-240VAC

Weight:

- RX Starfire 75: 0.4kg
- RX Starfire 150: 0.8kg
- RX Starfire 300: 1.6kg

Safety: CE, RoHS and REACH Compliant

Dimensions:

- RX Starfire 75: 100 x 49 x 104mm
- RX Starfire 150: 175 x 49 x 104mm
- RX Starfire 300: 325 x 49 x 104mm

Available Options:

- Inerting Fixture

For more information, contact your nearest Phoseon Representative or Phoseon Technology.



Phoseon Technology, Inc.  
 7425 NW Evergreen Parkway  
 Hillsboro, OR 97124  
 USA  
 Phone: +1.503.439.6446  
 Fax: +1.503.439.6408  
 E-Mail: info@phoseon.com  
 www.phoseon.com