

# RX FireFlex UV Light System



## High Intensity Water Cooled UV Light System with Configurable Curing Length

### FEATURES/BENEFITS:

- SEMICONDUCTOR LIGHT MATRIX (SLM™) TECHNOLOGY
- LONGER LIFE
- HIGH INTENSITY
- PURE UV OUTPUT
- ENVIRONMENTALLY FRIENDLY



RX FireFlex is available with configurable UV irradiance of 4-8 W/cm<sup>2</sup> for 150-300 total Watts of UV Power.

### Phoseon Lighting the Way - UV LED based SLM™ Technology

The RX FireFlex is a water cooled high intensity UV light “bar” with a configurable emitting lengths up to 2m and emitting width of 50mm.

Industrial UV curing applications for printing, coatings, and adhesives can now gain the proven advantages of high-intensity LED-based ultraviolet light.

As the world leader in delivering high power, UV-LED technology, Phoseon Technology pioneered the Semiconductor Light Matrix (SLM™). With SLM™ technology, OEMs can manufacture the environmentally cleanest, coolest operating, and most efficient UV-based systems commercially available.

RX Series products utilize SLM™ technology which combines an array of light emitting semiconductor devices, with high tech micro optics and micro cooling in a cost-effective MOEMS (micro opto electro-mechanical system) package. The result is a high intensity UV light system with the following advantages:

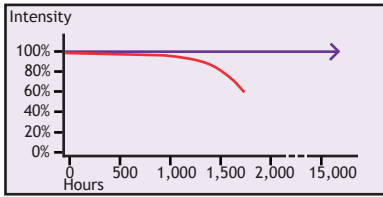
- Lower cost of ownership
- Increased productivity, maintenance free
- Improved yield with consistent UV output over time
- Lower operating cost with instant on/off - UV light system can be enabled only when required for curing
- Narrow UV spectral emission
- Spectral radiant power equivalent to multi-kilowatt mercury vapor arc lamp
- Cooler operating temperature
- Safer - mercury and ozone free
- Small form factor light source and power supply
- Simple electronic controls for easy integration

Phoseon's UV products are ideal for all types of curing applications including wood coatings.

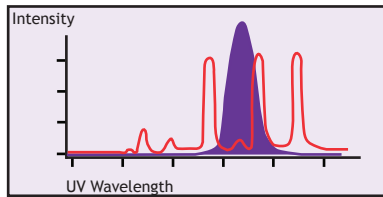


# RX FireFlex Specifications

## FEATURES



Phoseon's UV light systems (purple) maintain their intensity over a much longer lifetime than conventional mercury arc lamps (red).



Phoseon's UV light is more concentrated than UV light from mercury vapor arc lamps.

## SPECIFICATIONS

**Irradiance at UV Emitting Window:** 4W/cm<sup>2</sup> or 8W/cm<sup>2</sup>

**Emitting Window:** 75 x 50mm

**Total UV Power:** Up to 300W

**Peak Irradiance at LED (Modeled):** Up to 72W/cm<sup>2</sup>

**Pure UV Output:** 380-420nm

**Interface Control:** PLC

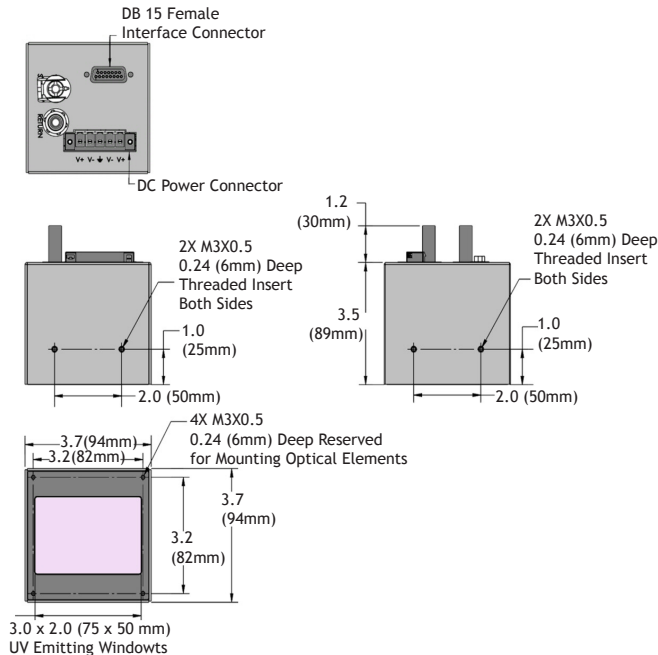
**Instant On/Off:** <5ms

**Weight:** 1kg

**Safety:** CE, RoHS and REACH Compliant

**Dimensions:** 94 x 94 x 119mm

## PRODUCT DIMENSIONS



For more information, contact your nearest Phoseon Representative or Phoseon Technology.



**Interested in integrating our technology?** Phoseon can tailor a solution for your particular integration needs. Please contact us to discuss your specific requirements.

**Phoseon Technology, Inc.**  
 7425 NW Evergreen Parkway  
 Hillsboro, OR 97124  
 USA  
 Phone: +1.503.439.6446  
 Fax: +1.503.439.6408  
 E-Mail [info@phoseon.com](mailto:info@phoseon.com)  
[www.phoseon.com](http://www.phoseon.com)