

# RX FireEdge UV Light System



## High Intensity Air Cooled UV Light System with Narrow Curing Length

### FEATURES/BENEFITS:

- SEMICONDUCTOR LIGHT MATRIX (SLM™) TECHNOLOGY
- LONGER LIFE
- HIGH INTENSITY
- PURE UV OUTPUT
- ENVIRONMENTALLY FRIENDLY



RX FireEdge can be mounted end to end to create a narrow bar.

### Phoseon Lighting the Way - UV LED based SLM™ Technology

The RX FireEdge is an air cooled high intensity UV light “bar” with a narrow emitting width and 75mm emitting length particularly suited for UV inkjet pinning.

Industrial UV curing applications for printing, coatings, and adhesives can now gain the proven advantages of high-intensity LED-based ultraviolet light.

As the world leader in delivering high power, UV-LED technology, Phoseon Technology pioneered the Semiconductor Light Matrix (SLM™). With SLM™ technology, OEMs can manufacture the environmentally cleanest, coolest operating, and most efficient UV-based systems commercially available.

RX Series products utilize SLM™ technology which combines an array of light emitting semiconductor devices, with high tech micro optics and micro cooling in a cost-effective MOEMS (micro opto electro-mechanical system) package. The result is a high intensity UV light system with the following advantages:

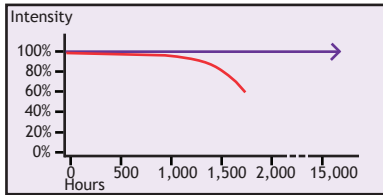
- Lower cost of ownership
- Increased productivity, maintenance free
- Improved yield with consistent UV output over time
- Lower operating cost with instant on/off - UV light system can be enabled only when required for curing
- Narrow UV spectral emission
- Spectral radiant power equivalent to multi-kilowatt mercury vapor arc lamp
- Cooler operating temperature
- Safer - mercury and ozone free
- Small form factor light source and power supply
- Simple electronic controls for easy integration



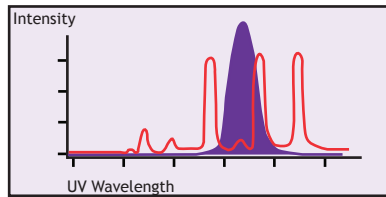
Phoseon's RX FireEdges can be daisy chained together ideally suited for UV inkjet pinning applications.

# RX FireEdge Specifications

## FEATURES



Phoseon's UV light systems (purple) maintain their intensity over a much longer lifetime than conventional mercury arc lamps (red).



Phoseon's UV light is more concentrated than UV light from mercury vapor arc lamps.

## SPECIFICATIONS

Irradiance at UV Emitting Window: Up to 1W/cm<sup>2</sup>

Emitting Window: 75 x 5mm

Total UV Power: Up to 3.75W

Peak Irradiance at LED (Modeled): 35W/cm<sup>2</sup>

Pure UV Output: 380-420nm

Interface Control: PLC

Instant On/Off: <5ms

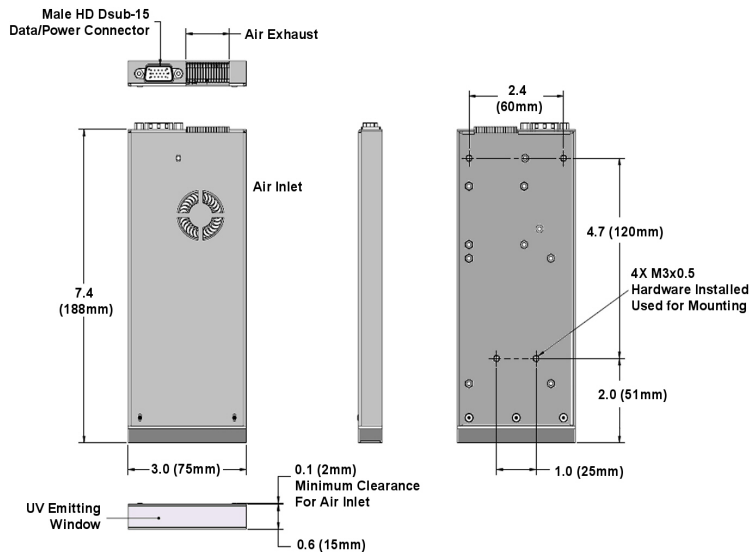
Electrical/Power Supply: 100-240VAC

Weight: 0.4kg

Safety: CE, RoHS and REACH Compliant

Dimensions: 75 x 15 x 188mm

## PRODUCT DIMENSIONS



For more information, contact your nearest Phoseon Representative or Phoseon Technology.



Interested in integrating our technology? Phoseon can tailor a solution for your particular integration needs. Please contact us to discuss your specific requirements.

Phoseon Technology, Inc.  
7425 NW Evergreen Parkway  
Hillsboro, OR 97124  
USA  
Phone: +1.503.439.6446  
Fax: +1.503.439.6408  
E-Mail: [info@phoseon.com](mailto:info@phoseon.com)  
[www.phoseon.com](http://www.phoseon.com)